

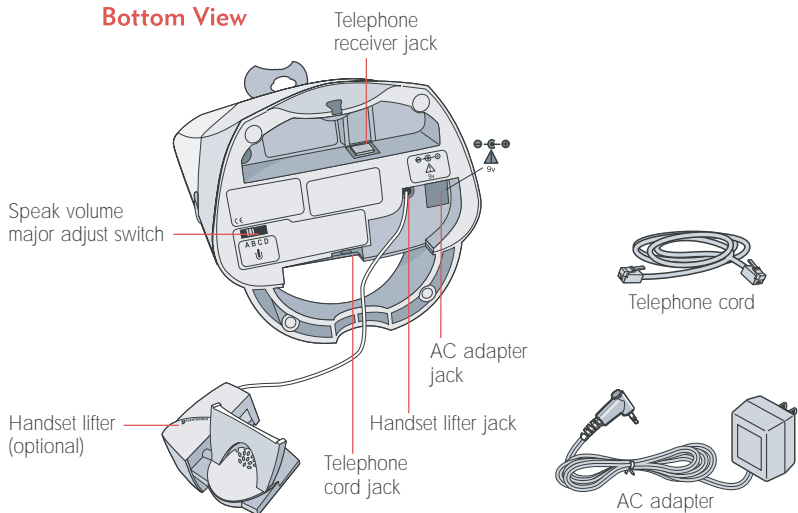
AVAYA



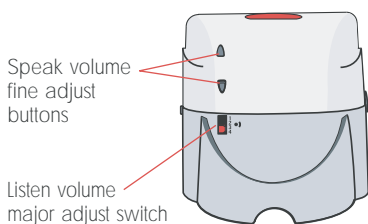
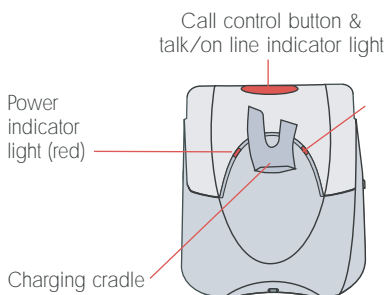
ABT-35/ABT-34 BLUETOOTH® HEADSET SYSTEM

User Guide

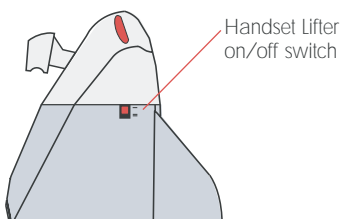
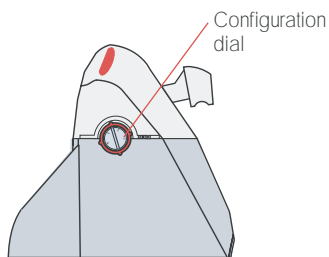
Bottom View



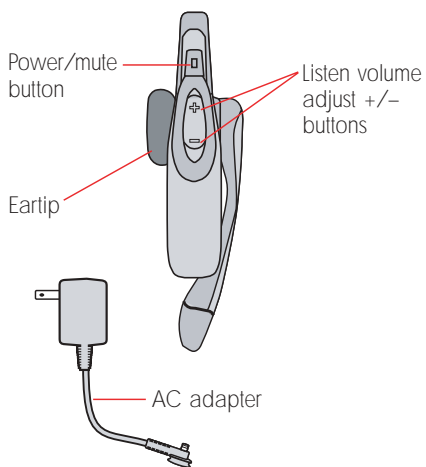
Front & Back



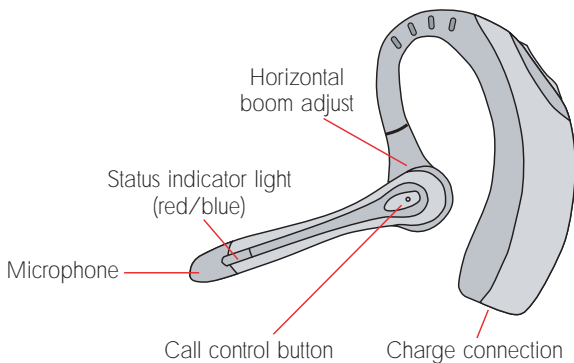
Left & Right Side



Back

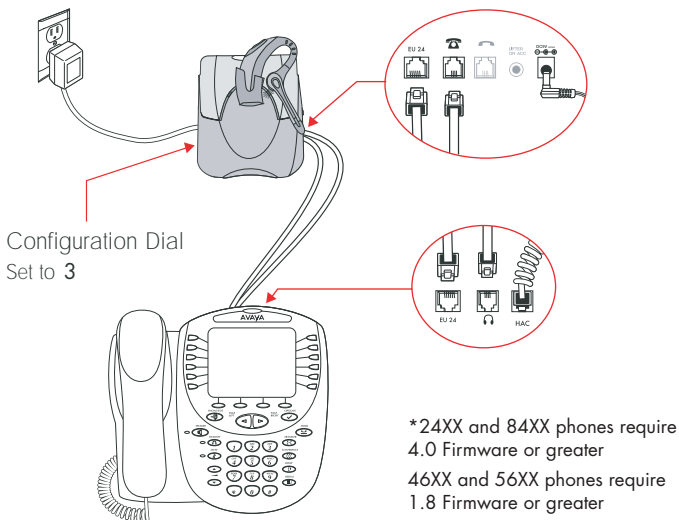


Outside



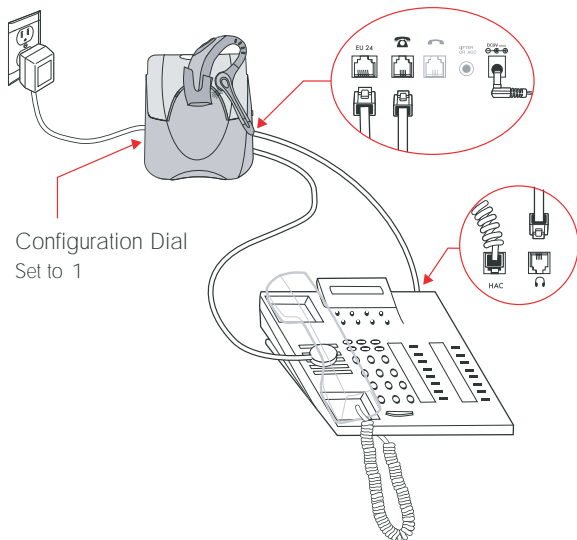
CONNECTING YOUR ABT-35 SETUP 1

WITH AVAYA 2420, 4610SW, 4620, 4620SW, 4621SW,
4622SW, 4630SW, 5420, 5610 AND 5620 TELEPHONES*



CONNECTING YOUR ABT-35 SETUP 2

WITH AVAYA 2410, 4630, 5410,
6416 D+M AND 6424 D+M TELEPHONES





Caution: It is important for correct and safe operation that the base cord is installed into the proper jack of your telephone. Follow these instructions carefully, especially if your telephone has two jacks where the handset was attached. Be sure to note or mark which jack was used for the handset.

